

FLEXQUERY

Decision Support and Data Analysis

Decision making for your business just got easier, more powerful and more economic!

HEAD OFFICE

Enterprise-wide data analysis with exporting and advanced customization. Control over what a particular user is able to see and do.

STORE

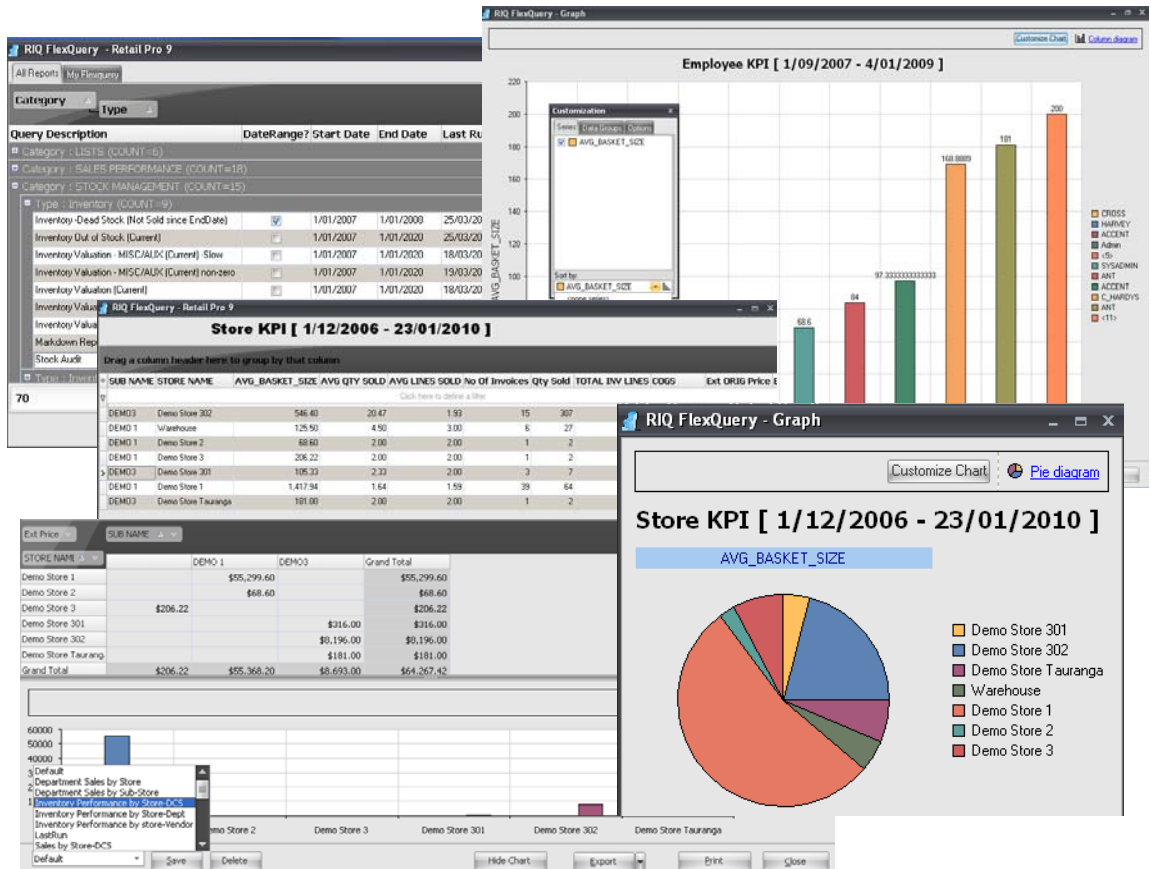
Controlled views of specified reports. The store manager sees a specified group of reports, fixed data layouts and only their data. Simple operation and locked down data formats means less skill needed in-store for reporting.

OTHER LOCATIONS

The operator sees a specified group of reports with the added ability to see specified multi-subsidiary information.

YOU CAN

- Track, monitor, explore and analyze your data such as sales, margins and performance -by enterprise, store, vendor, department etc.
- Identify your most valuable inventory items, vendors or customers
- Dynamically chart selected data
- Launch commonly used reports with previously saved layouts from My Flexquery
- Use results to help improve overall performance and margin



FlexQuery is a unique add-on for Retail Pro, allowing new insight into your data collected by your retail organisation. It is a sophisticated but practical business tool providing fast, easy, and more in-depth access to your data and valuable analytical evaluation of the inner workings of your store.

No more poring over increasingly longer paper reports or trying to find the one page containing the data you want to see. Once you see your data onscreen, every column can be sorted or filtered. The quick filter bar provides immediate focus on just what you want to see, whether it be the performance of a particular item, the dates and times an item was sold, what a particular customer purchased, items sold with a discount, items below a specified margin, items received from a particular supplier or many more options.

You can filter across several columns at once, even using English-like expressions such as 'is greater than' or 'is like'. And you won't have to exit and rerun to see the results!

Graphs are supported and YOU decide what is shown on them. Watch graphs change before your eyes with dynamic charting in pivot reports.

Put your commonly used reports and layouts into My Flexquery, complete with pre-saved filtering/grouping/totaling. Easy access at your fingertips.

Imagine sitting down with your vendor representative to discuss new purchases and negotiate new pricing. Flexquery puts the power at your fingertips to look at vendor performance from all angles, right in front of your eyes. Suddenly YOU are in control.

FLEXQUERY

Decision Support and Data Analysis

ADDITIONAL FEATURES

- My Flexquery shows only selected reports
- Hide or show any column
- Translate standard field names
- Group data any way you want
- Define group subtotals
- Define grand totals
- Pre-define column formats
- Pre-define pivot summary types
- Export filtered data
- Print data as it appears onscreen
- Print graphs and pivot tables
- 'Last run' layouts /sorts/filters/ grouping are saved for next time

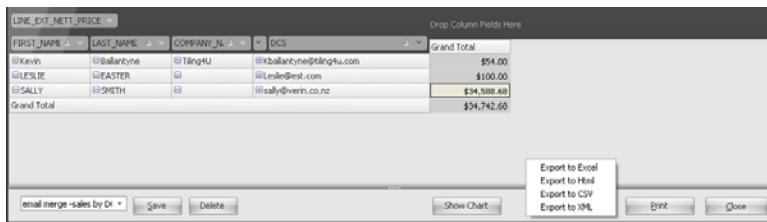
FOR RETAIL PRO

- Uniquely flexible stock audit lets you see and analyze inventory-control
- KPIs including sales/sq metre
- Quick Delta Table lookup
- Employee key ratios including avg basket size/avg lines/avg units
- Subsidiary reporting supported
- Over 300 predefined 'reports'

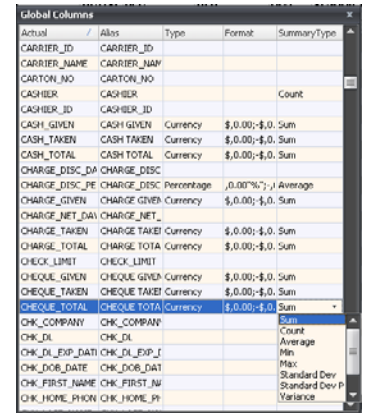
Retail Pro V8 version available soon



My Flexquery



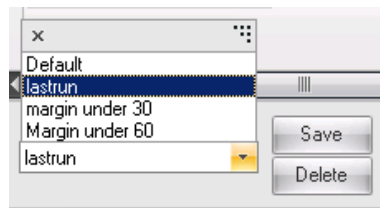
Email Merge from Customer Invoices with Item Detail



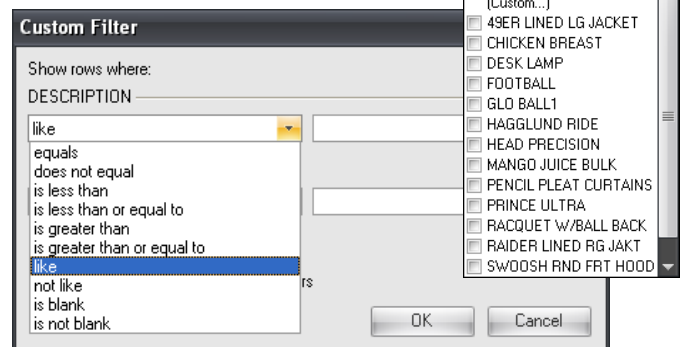
Column translation/Formatting



Inventory KPIs



Layout load/save/delete



Filtering selections